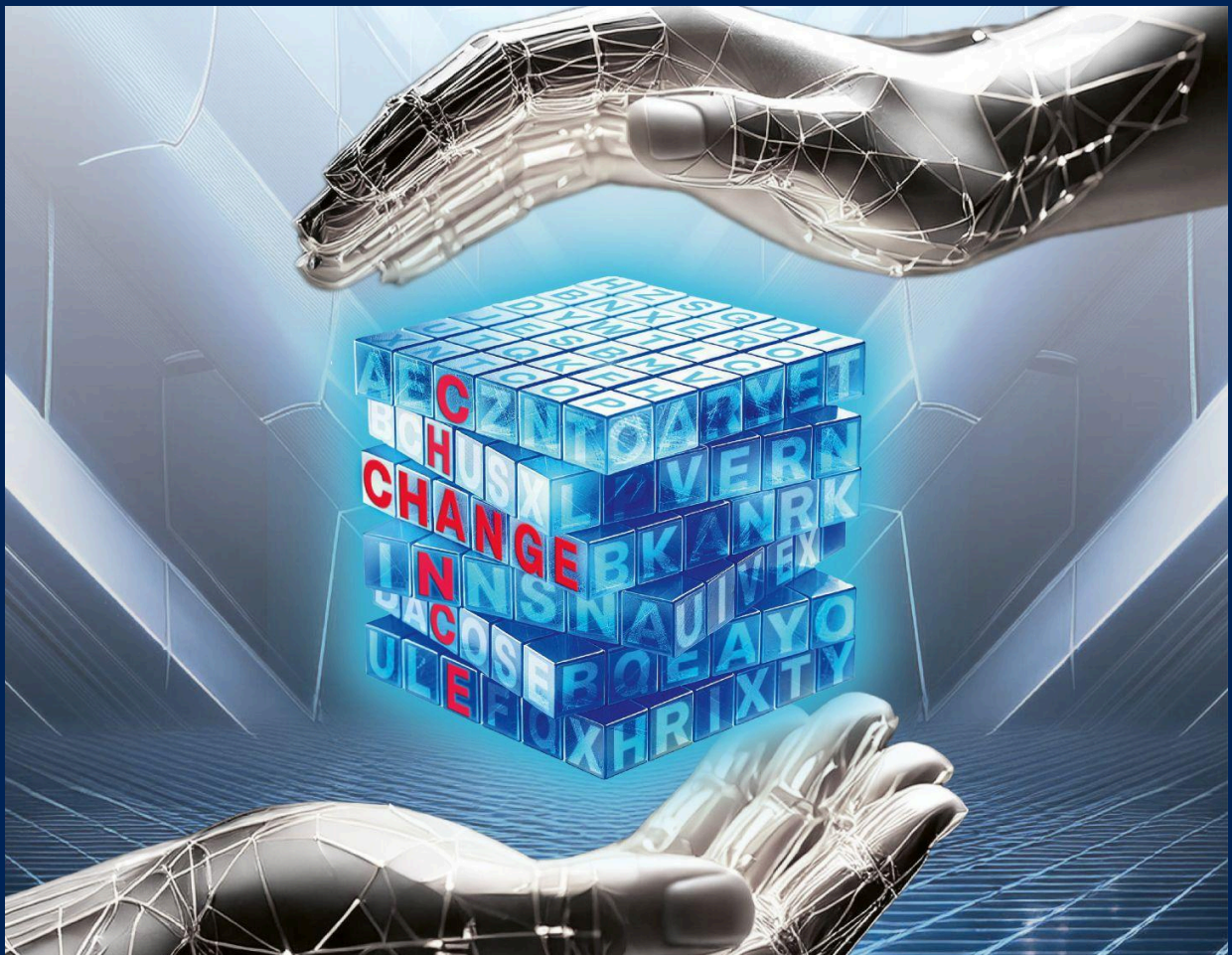


Annual General Meeting 2025

Item 5: Election to the Supervisory Board

Qualification matrix of the shareholders' representatives



we're on it.

Qualification matrix of the shareholder representatives of the Supervisory Board of Koenig & Bauer AG

		Prof. Dr.-Ing. Raimund Klinkner	Dipl.-Volkswirtin Dagmar Rehm	Dipl.-Kaufmann Carsten Dentler	Dipl.-Ing. Claus Bolza-Schünemann	Dr. Johannes Liechtenstein	Karoline Kalb*
Length of membership	Member since elected until	2018 2028	2014 2028	2017 2027	2023 2027	2019 2028	2025 2029
Function	Supervisory Board Audit Committee Nominating Committee Personnel Committee Mediation Committee pursuant to section 27 (3) of the Co-Determination Act Strategy Committee	Chairman Chairman Chairman Chairman Member	Deputy chairwoman Chairwoman Member 	Member Member Member Member	Member Member Member Member	Member Member 	Member
Personal suitability	Independence according to the German Corporate Governance Code No Overboarding	✓ ✓	✓ ✓	✓ ✓	✓ 	✓ ✓	✓ ✓
Diversity	Year of birth Gender Nationality Educational background	1965 male German university-qualified engineer	1963 female German university-qualified economist	1964 male German university-qualified business administrator	1956 male German university-qualified engineer	1969 male Liechtenstein business economist /Doctor of Natural Sciences	1972 female German lawyer
International experience	Europe United States of America China Asia-Pacific region Latin America Africa	✓ ✓ ✓ ✓ ✓ 	✓ ✓ ✓ ✓	✓ ✓ ✓ ✓ ✓ 	✓ ✓ ✓ ✓ ✓	✓ ✓ ✓ 	✓ ✓ ✓ ✓
Professional skills *	Supervisory board and committee Work Management, leadership and strategy Human Resources Legal, compliance and corporate governance Capital market, corporate financing Mergers & Acquisitions (M&A)	●●● ●●● ●●● ●● ●●● ●●● ●●●	●●● ●●● ●● ●●● ●●● ●●● ●●	●●● ●●● ●●● ●●● ●●● ●●● ●●●	●●● ●●● ●●● ●● ●● ●● ●●●	●● ●●● ●● ●●● ●● ●● ●●●	●●● ●●● ●●● ●●● ●●● ●●● ●●●

	Accounting (including internal control and risk management systems and sustainability reporting)	●●	●●●	●●●	●●	●●●	●●●
	Auditing of financial statements (including sustainability reporting and auditing)	●●	●●●	●●●	●●	●●●	●●●
	Risk management	●●●	●●●	●●●	●●	●●	●●●
	IT systems /cybersecurity	●●	●●●	●●	●●	●●	●●
	Digitisation	●●	●●	●●	●●	●●	●●
	Sales, marketing and after-sales services	●●●	●●	●●	●●●	●●	●●
	Operations and operational excellence	●●●	●●	●●	●●●	●●	●
	Environment, social and corporate governance (ESG)	●●	●●●	●●	●	●●	●●●
Sector knowledge*							
Machine and plant engineering, preferably printing industry, printing technologies and packaging	Markets and competition	●●●	●●	●●	●●●	●	●●
	Products and new technologies, innovation and R & D	●●●	●●	●●	●●●	●	●●●
Designated expert							
	Financial expert in accordance with section 100 (5) of the German Stock Corporation Act / Recommendation D.3 of the German Corporate Governance Code		✓	✓		✓	✓

* Self-assessment of the Supervisory Board member

● = Competence level 1 corresponds to basic knowledge

●● = Competence level 2 (in-depth knowledge) corresponds to knowledge acquired through existing qualifications (professional background) or through work as a member of the supervisory board and through regular training courses

●●● = Competence level 3 (expert knowledge) corresponds to thorough knowledge/expertise acquired through existing qualifications (professional background) or as part of the activity as a member of the supervisory board as well as through regular training measures combined with practical operational experience